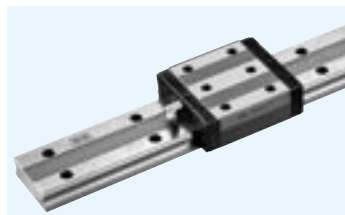


SGW-TF TYPE



part number structure

example **SGW 21 TF B 2 T1 - 589 P / W2 FS LB F - KGL**

<p>SGW type</p> <p>size</p> <p>TF typeblock</p> <p>seal (refer to page A-14)</p> <p>blank: with side-seals</p> <p>B: with side-seals + under-seals</p> <p>number of blocks attached to one rail</p> <p>preload symbol</p> <p>blank: standard</p> <p>T1: light</p> <p>T2: medium</p> <p>total length of rail</p> <p>accuracy grade</p> <p>blank: standard</p> <p>H: high</p> <p>P: precision</p>	<p>symbol for grease</p> <p>blank: standard grease</p> <p>KGL: lithium-based grease</p> <p>KGU: urea-based grease</p> <p>KGF: anti-fretting grease</p> <p>GK: K-grease</p> <p>refer to page Eng-39~</p> <p>with rail mounting hole caps</p> <p>with low temperature black chrome treatment</p> <p>with Fiber Sheet</p> <p>symbol for number of axes*</p> <p>blank: single axis</p> <p>W2: 2 parallel axes</p> <p>W3: 3 parallel axes</p>
---	--

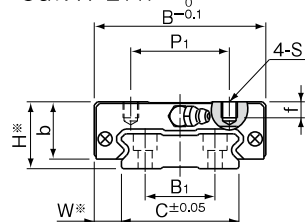
*The symbol for the number of axes does not mean the number of rails ordered.

part number	assembly dimensions		block dimensions											grease fitting
	H	W	B	L ₁	L ₂	P ₁	P ₂	S	f	T	b	E	T ₁	
	mm	mm	mm	mm	mm	mm	mm	mm	mm	mm	mm	mm	mm	
SGW17TF	17	8.5	50	51	33.6	29	15	M4	4	—	14.5	2.5	4	pressed fitting
SGW21TF	21	8.5	54	58	40	31	19	M5	5	—	18	4.5	B-M6F	
SGW27TF	27	10	62	71.8	51.8	46	32	M6	6	10	24	6		
SGW35TF	35	15.5	100	106.6	77.6	76	50	M8	8	14	31	8		

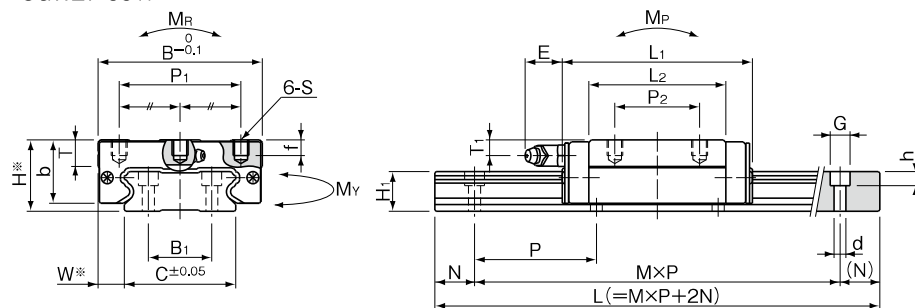
part number	standard rail length L mm										
SGW17	110	150	190	230	270	310	350	390	430	510	590
SGW21	130	180	230	280	330	380	430	480	530	630	730
SGW27	160	220	280	340	400	460	520	640	760	880	1,000
SGW35	280	360	440	520	600	680	760	920	1,080	1,240	1,400

Rails exceeding the maximum specified length may be fabricated if joints are used. Please contact NB for assistance.

SGW17·21TF



SGW27·35TF



*Please refer to page A-73 for accuracy.

M: number of pitches

guide rail dimensions						basic load rating			allowable static moment			mass		block size
H ₁	C	B ₁	d×G×h	N	P	dynamic C	static Co	M _{P2}	M _{Y2}	M _R	block	guide rail		
mm	mm	mm	mm	mm	mm	kN	kN	N·m	N·m	N·m	kg	kg/m		
9	33	18	4.5×7.5×5.3	15	40	4.82	8.56	42.8 261	42.8 261	160	0.13	2.05	17	
11	37	22			50	7.01	12.1	72.3 418	72.3 418	253	0.20	2.84	21	
15	42	24			60	12.9	21.5	171 931	171 931	496	0.38	4.43	27	
19	69	40			7×11×9	20	80	30.6	48.5	578 3,100	578 3,100	1,850	1.16	9.32

M_{P2} and M_{Y2} are allowable static moments when two blocks are used in close contact. 1kN≐102kgf 1N·m≐0.102kgf·m

							maximum length mm
670	750	830	950	1,070	1,190	1,310	2,000
830	930	1,030	1,180	1,330	1,480		2,000
1,180	1,360	1,540	1,720	1,900			3,000
1,640	1,880	2,120					3,000