

SMKC TYPE

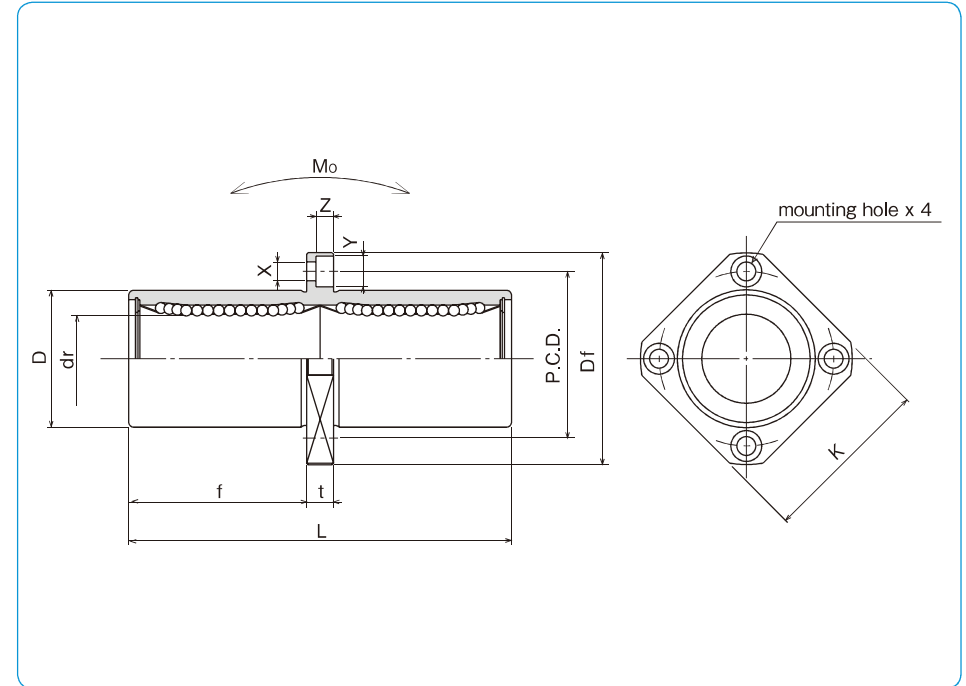
– Center Mount Square Flange Type –



part number structure

example **SMSKC 25 G UU-SK**

specification SMKC : standard SMSKC : anti-corrosion	outer cylinder surface treatment blank : no surface treatment SK : electroless nickel plating LF : low temperature black chrome treatment with fluoride coating SB : black oxide (not available on anti-corrosion type) SC : industrial chrome plating
inner contact diameter (dr)	seal blank : without seal UU : seals on both sides
retainer material blank : standard/steel anti-corrosion/stainless steel G : resin	



part number				number of ball circuits	major dimensions				
standard steel retainer	resin retainer	anti-corrosion stainless retainer resin retainer			dr mm	tolerance μm	D mm	tolerance μm	L ± 0.3 mm
SMKC 6	SMKC 6G	SMSKC 6	SMSKC 6G	4	6	0	12	0	35
SMKC 8	SMKC 8G	SMSKC 8	SMSKC 8G	4	8	-10	15	-13	45
SMKC 10	SMKC 10G	SMSKC 10	SMSKC 10G	4	10	0	19	0	55
SMKC 12	SMKC 12G	SMSKC 12	SMSKC 12G	4	12	-10	21	0	57
SMKC 13	SMKC 13G	SMSKC 13	SMSKC 13G	4	13	0	23	-16	61
SMKC 16	SMKC 16G	SMSKC 16	SMSKC 16G	4	16	0	28	0	70
SMKC 20	SMKC 20G	SMSKC 20	SMSKC 20G	5	20	-12	32	0	80
SMKC 25	SMKC 25G	SMSKC 25	SMSKC 25G	6	25	0	40	-19	112
SMKC 30	SMKC 30G	SMSKC 30	SMSKC 30G	6	30	-15	45	0	123
SMKC 35	SMKC 35G	SMSKC 35	SMSKC 35G	6	35	0	52	0	135
SMKC 40	SMKC 40G	SMSKC 40	SMSKC 40G	6	40	-15	60	-22	151
SMKC 50	SMKC 50G	SMSKC 50	SMSKC 50G	6	50	0	80	0	192
SMKC 60	SMKC 60G	SMSKC 60	SMSKC 60G	6	60	0/-20	90	0/-25	209

flange						eccentricity μm	perpendicularity μm	basic load rating		allowable static moment $\text{N} \cdot \text{m}$	mass g	shaft diameter mm		
f mm	Df mm	K mm	t mm	P.C.D. mm	X×Y×Z mm			dynamic C N	static Co N					
15	28	22	5	20	3.5×6×3.1	15	15	323	530	2.18	25	6		
20	32	25	5	24	3.5×6×3.1			431	784	4.31	43	8		
24.5	40	30	6	29	4.5×7.5×4.1			588	1,100	7.24	78	10		
25.5	42	32	6	32	4.5×7.5×4.1			813	1,570	10.9	90	12		
27.5	43	34	6	33	4.5×7.5×4.1			813	1,570	11.6	108	13		
32	48	37	6	38	4.5×7.5×4.1			1,230	2,350	19.7	165	16		
36	54	42	8	43	5.5×9×5.1	20	20	1,400	2,740	26.8	225	20		
52	62	50	8	51	5.5×9×5.1			1,560	3,140	43.4	500	25		
56.5	74	58	10	60	6.6×11×6.1			2,490	5,490	82.8	590	30		
62.5	82	64	10	67	6.6×11×6.1			2,650	6,270	110	930	35		
69	96	75	13	78	9×14×8.1			25	25	3,430	8,040	147	1,380	40
89.5	116	92	13	98	9×14×8.1					6,080	15,900	397	3,400	50
95.5	134	106	18	112	11×17×11.1	7,550	20,000			530	4,060	60		

1N≐0.102kgf 1N·m≐0.102kgf·m

KBKC TYPE (Euro Standard)

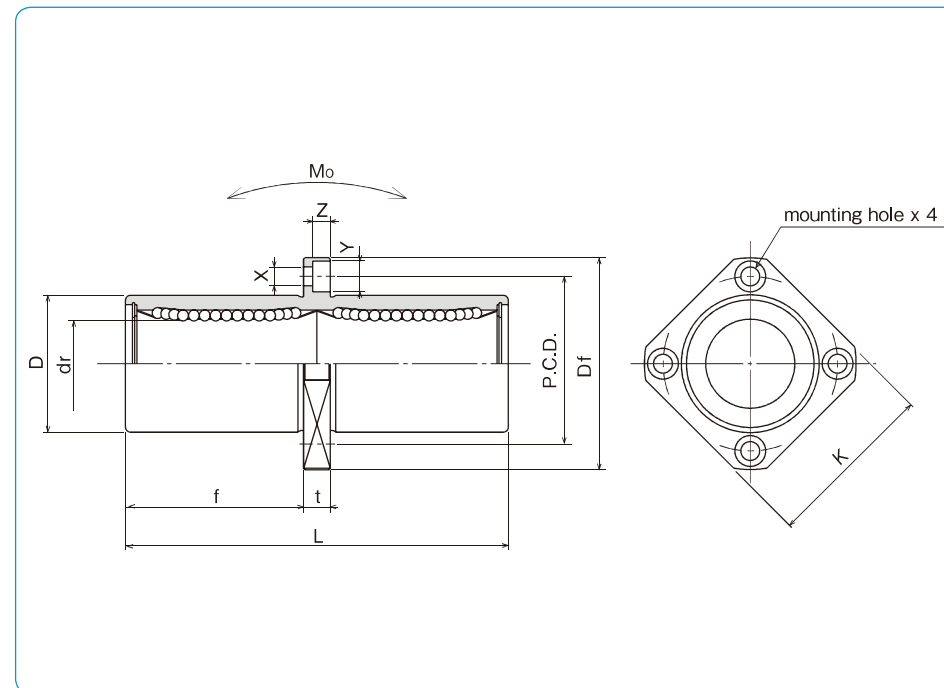
— Center Mount Square Flange Type —



part number structure

example **KBSKC 25 G UU-SK**

specification KBKC: standard KBSKC: anti-corrosion	outer cylinder surface treatment blank: no surface treatment SK: electroless nickel plating LF: low temperature black chrome treatment with fluoride coating SB: black oxide (not available on anti-corrosion type) SC: industrial chrome plating
inner contact diameter (dr)	seal blank: without seal UU: seals on both sides
retainer material blank: standard/steel G: anti-corrosion/stainless steel G: resin	



part number				number of ball circuits	dr		major dimensions		
standard steel retainer	resin retainer	anti-corrosion stainless retainer	resin retainer		mm	tolerance μm	D mm	tolerance μm	L ± 0.3 mm
KBKC 8	KBKC 8G	KBSKC 8	KBSKC 8G	4	8	+ 9	16	0/-13	46
KBKC 12	KBKC 12G	KBSKC 12	KBSKC 12G	4	12	- 1	22	0	61
KBKC 16	KBKC 16G	KBSKC 16	KBSKC 16G	4	16	+11	26	-16	68
KBKC 20	KBKC 20G	KBSKC 20	KBSKC 20G	5	20	- 1	32	0	80
KBKC 25	KBKC 25G	KBSKC 25	KBSKC 25G	6	25	+13	40	-19	112
KBKC 30	KBKC 30G	KBSKC 30	KBSKC 30G	6	30	- 2	47	-19	123
KBKC 40	KBKC 40G	KBSKC 40	KBSKC 40G	6	40	+16	62	0	151
KBKC 50	KBKC 50G	KBSKC 50	KBSKC 50G	6	50	- 4	75	-22	192
KBKC 60	KBKC 60G	KBSKC 60	KBSKC 60G	6	60	- 4	90	0/-25	209

flange						eccentricity μm	perpendicularity μm	basic load rating		allowable static moment $\text{N} \cdot \text{m}$	mass g	shaft diameter mm
f mm	Df mm	K mm	t mm	P.C.D. mm	X×Y×Z mm			dynamic C N	static Co N			
20.5	32	25	5	24	3.5×6×3.1	15	15	421	804	4.3	51	8
27.5	42	32	6	32	4.5×7.5×4.1			813	1,570	11.7	90	12
31	46	35	6	36	4.5×7.5×4.1			921	1,780	14.2	135	16
36	54	42	8	43	5.5×9×5.1	17	17	1,370	2,740	25.0	225	20
52	62	50	8	51	5.5×9×5.1			1,570	3,140	44.0	500	25
56.5	76	60	10	62	6.6×11×6.1			2,500	5,490	78.9	720	30
69	98	75	13	80	9×14×8.1	20	20	3,430	8,040	147	1,600	40
89.5	112	88	13	94	9×14×8.1			6,080	15,900	396	2,620	50
95.5	134	106	18	112	11×17×11.1			7,550	20,000	487	4,480	60

1N \approx 0.102kgf 1N \cdot m \approx 0.102kgf \cdot m