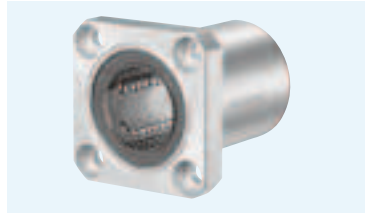


SMK TYPE

– Square Flange Type –



part number structure

example **SMSK 25 G UU-SK**

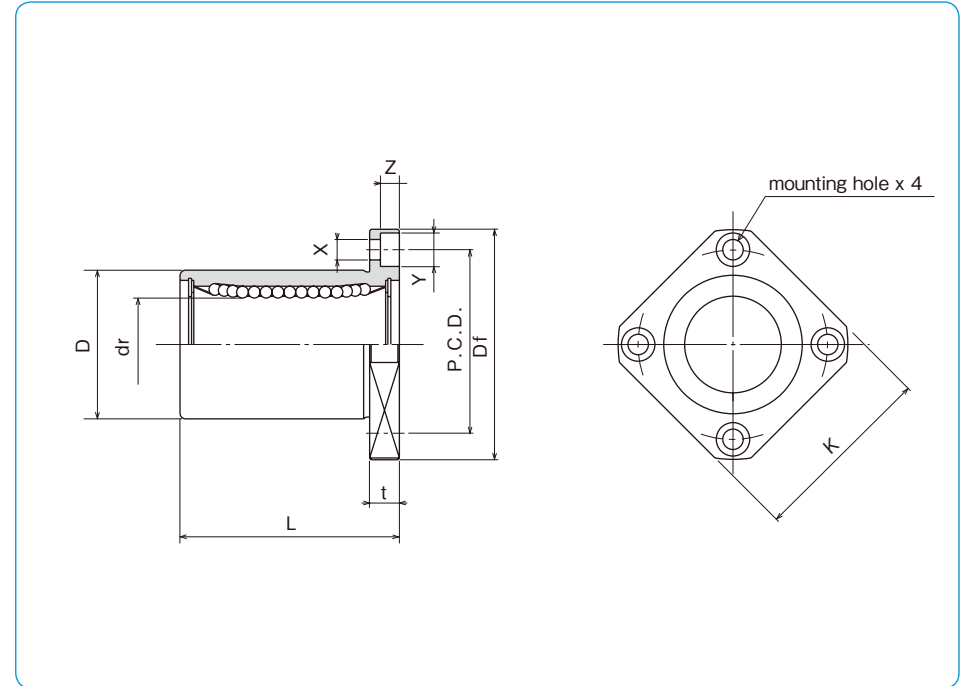
specification
SMK: standard
SMSK: anti-corrosion

inner contact diameter (dr)

retainer material
blank: standard/steel
 anti-corrosion/stainless steel
G: resin

outer cylinder surface treatment
blank: no surface treatment
SK: electroless nickel plating
LF: low temperature black chrome treatment with fluoride coating
SB: black oxide (not available on anti-corrosion type)
SC: industrial chrome plating

seal
blank: without seal
UU: seals on both sides



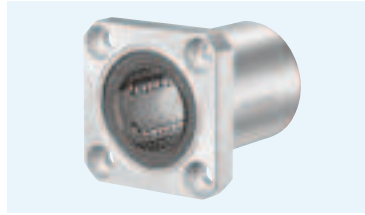
part number				number of ball circuits	dr		major dimensions		
standard steel retainer	resin retainer	anti-corrosion			mm	tolerance μm	D mm	tolerance μm	L ± 0.3 mm
SMK 6	SMK 6G	SMSK 6	SMSK 6G	4	6	12	0	19	
SMK 8s	SMK 8sG	SMSK 8s	SMSK 8sG	4	8	15	-13	17	
SMK 8	SMK 8G	SMSK 8	SMSK 8G	4	8	15	0	24	
SMK 10	SMK 10G	SMSK 10	SMSK 10G	4	10	19	0	29	
SMK 12	SMK 12G	SMSK 12	SMSK 12G	4	12	21	-16	30	
SMK 13	SMK 13G	SMSK 13	SMSK 13G	4	13	23	0	32	
SMK 16	SMK 16G	SMSK 16	SMSK 16G	4	16	28	0	37	
SMK 20	SMK 20G	SMSK 20	SMSK 20G	5	20	32	-19	42	
SMK 25	SMK 25G	SMSK 25	SMSK 25G	6	25	40	0	59	
SMK 30	SMK 30G	SMSK 30	SMSK 30G	6	30	45	-12	64	
SMK 35	SMK 35G	SMSK 35	SMSK 35G	6	35	52	0	70	
SMK 40	SMK 40G	SMSK 40	SMSK 40G	6	40	60	-22	80	
SMK 50	SMK 50G	SMSK 50	SMSK 50G	6	50	80	0	100	
SMK 60	SMK 60G	SMSK 60	SMSK 60G	6	60	90	0	110	
SMK 80	–	–	–	6	80	120	-15	140	
SMK 100	–	–	–	6	100	150	0/-20	175	

Df mm	flange				eccentricity μm	perpendicularity μm	basic load rating		mass g	shaft diameter mm
	K mm	t mm	P.C.D. mm	X×Y×Z mm			dynamic C N	static Co N		
28	22	5	20	3.5×6×3.1	12	12	206	265	18	6
32	25	5	24	3.5×6×3.1			176	216	24	8
32	25	5	24	3.5×6×3.1			274	392	29	8
40	30	6	29	4.5×7.5×4.1			372	549	52	10
42	32	6	32	4.5×7.5×4.1			510	784	57	12
43	34	6	33	4.5×7.5×4.1			510	784	72	13
48	37	6	38	4.5×7.5×4.1	774	1,180	104	16		
54	42	8	43	5.5×9×5.1	882	1,370	145	20		
62	50	8	51	5.5×9×5.1	1,570	1,570	300	25		
74	58	10	60	6.6×11×6.1	1,570	2,740	375	30		
82	64	10	67	6.6×11×6.1	1,670	3,140	560	35		
96	75	13	78	9×14×8.1	2,160	4,020	880	40		
116	92	13	98	9×14×8.1	3,820	7,940	2,000	50		
134	106	18	112	11×17×11.1	4,700	10,000	2,560	60		
164	136	18	142	11×17×11.1	7,350	16,000	5,300	80		
200	170	20	175	14×20×13.1	14,100	34,800	9,900	100		

1N=0.102kgf

KBK TYPE (Euro Standard)

– Square Flange Type –



part number structure

example **KBSK 25 G UU-SK**

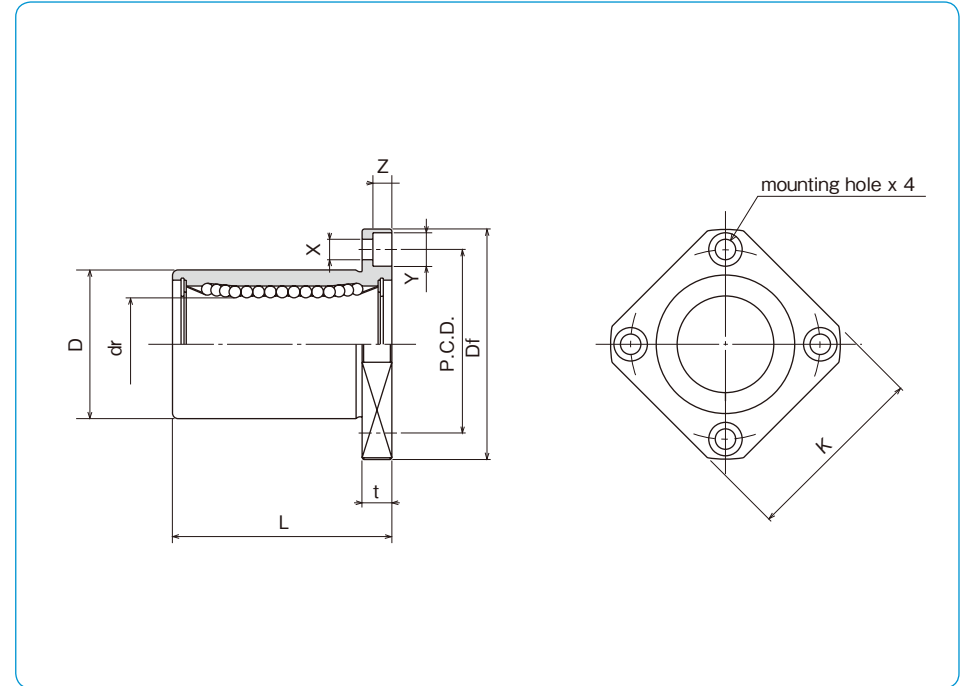
specification
KBK: standard
KBSK: anti-corrosion

inner contact diameter (dr)

retainer material
blank: standard/steel
 anti-corrosion/stainless steel
G: resin

outer cylinder surface treatment
blank: no surface treatment
SK: electroless nickel plating
LF: low temperature black chrome treatment with fluoride coating
SB: black oxide (not available on anti-corrosion type)
SC: industrial chrome plating

seal
blank: without seal
UU: seals on both sides



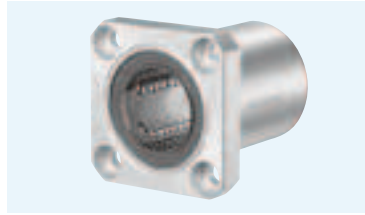
part number				number of ball circuits	dr		major dimensions		
standard steel retainer	resin retainer	anti-corrosion			mm	tolerance μm	D mm	tolerance μm	L ± 0.3 mm
—	KBK 5G	—	KBSK 5G	4	5		12	0	22
KBK 8	KBK 8G	KBSK 8	KBSK 8G	4	8	+ 8	16	-13	25
KBK12	KBK12G	KBSK12	KBSK12G	4	12	0	22	0	32
KBK16	KBK16G	KBSK16	KBSK16G	4	16	+ 9	26	-16	36
KBK20	KBK20G	KBSK20	KBSK20G	5	20	- 1	32	0	45
KBK25	KBK25G	KBSK25	KBSK25G	6	25	+11	40	0	58
KBK30	KBK30G	KBSK30	KBSK30G	6	30	- 1	47	-19	68
KBK40	KBK40G	KBSK40	KBSK40G	6	40		62	0	80
KBK50	KBK50G	KBSK50	KBSK50G	6	50	+13	75	-22	100
KBK60	KBK60G	KBSK60	KBSK60G	6	60	- 2	90	0	125
KBK80	—	—	—	6	80	+16/-4	120	-25	165

Df mm	K mm	flange			eccentricity μm	perpendicularity μm	basic load rating		mass g	shaft diameter mm
		t mm	P.C.D. mm	X×Y×Z mm			dynamic C N	static Co N		
28	22	5	20	3.5×6×3.1	12	12	206	265	20	5
32	25	5	24	3.5×6×3.1			265	402	33	8
42	32	6	32	4.5×7.5×4.1			510	784	64	12
46	35	6	36	4.5×7.5×4.1			578	892	90	16
54	42	8	43	5.5×9×5.1	15	15	862	1,370	147	20
62	50	8	51	5.5×9×5.1			980	1,570	295	25
76	60	10	62	6.6×11×6.1			1,570	2,740	465	30
98	75	13	80	9×14×8.1	17	17	2,160	4,020	975	40
112	88	13	94	9×14×8.1			3,820	7,940	1,545	50
134	106	18	112	11×17×11.1			4,700	9,800	2,780	60
164	136	18	142	11×17×11.1	20	20	7,350	16,000	5,920	80

1N=0.102kgf

SWK TYPE (Inch Standard)

– Square Flange Type –



part number structure

example **SWSK 16 G UU-SK**

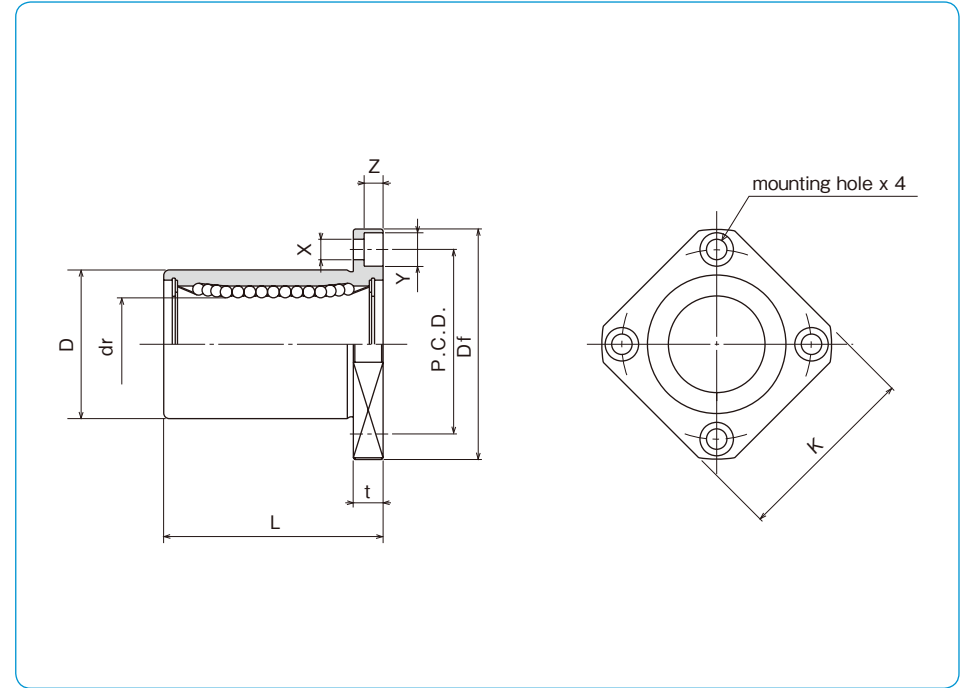
specification
SWK: standard
SWSK: anti-corrosion

size

retainer material
blank: standard/steel
 anti-corrosion/stainless steel
G: resin

outer cylinder
 surface treatment
blank: no surface treatment
SK: electroless nickel plating
LF: low temperature black chrome
 treatment with fluoride coating
SB: black oxide (not available on
 anti-corrosion type)
SC: industrial chrome plating

seal
blank: without seal
UU: seals on both sides



part number				number of ball circuits	major dimensions		
standard steel retainer	anti-corrosion resin retainer	stainless steel retainer	resin retainer		dr inch (mm) tolerance inch/(μm)	D inch (mm) tolerance inch/(μm)	L ±.012 (±0.3) inch/(mm)
SWK 4	SWK 4G	SWSK 4	SWSK 4G	4	.2500 (6.350)	.5000 (12.700)	.7500 (19.050)
SWK 6	SWK 6G	SWSK 6	SWSK 6G	4	.3750 (9.525)	.6250 (15.875)	.8750 (22.225)
SWK 8	SWK 8G	SWSK 8	SWSK 8G	4	.5000 (12.700)	.8750 (22.225)	1.2500 (31.750)
SWK10	SWK10G	SWSK10	SWSK10G	4	.6250 (15.875)	1.1250 (28.575)	1.5000 (38.100)
SWK12	SWK12G	SWSK12	SWSK12G	5	.7500 (19.050)	1.2500 (31.750)	1.6250 (41.275)
SWK16	SWK16G	SWSK16	SWSK16G	6	1.0000 (25.400)	1.5625 (39.688)	2.2500 (57.150)
SWK20	SWK20G	SWSK20	SWSK20G	6	1.2500 (31.750)	2.0000 (50.800)	2.6250 (66.675)
SWK24	SWK24G	SWSK24	SWSK24G	6	1.5000 (38.100)	2.3750 (60.325)	3.0000 (76.200)
SWK32	SWK32G	SWSK32	SWSK32G	6	2.0000 (50.800)	3.0000 (76.200)	4.0000 (101.600)
SWK40	–	–	–	6	2.5000 (63.500)	3.7500 (95.250)	5.0000 (127.000)
SWK48	–	–	–	6	3.0000 (76.200)	4.5000 (114.300)	6.0000 (152.400)
SWK64	–	–	–	6	4.0000 (101.600)	6.0000 (152.400)	8.0000 (203.200)

flange					eccentricity inch (μm)	perpendicularity inch (μm)	basic load rating		mass g	shaft diameter inch (mm)
Df inch (mm)	K inch (mm)	t inch (mm)	P.C.D. inch (mm)	X × Y × Z inch (mm)			dynamic C N	static Co N		
1.2500 (31.750)	1.0000 (25.400)	0.219 (5.556)	.8750 (22.225)	.1560 × 2500 × .1410 (3.969 × 6.350 × 3.572)	.0005 (12)	.0005 (12)	206	265	25 (6.350)	
1.5000 (38.100)	1.2500 (31.750)	.2500 (6.350)	1.0620 (26.988)	.1875 × 2970 × .1720 (4.763 × 7.541 × 4.366)			225	314	32 (9.525)	
1.7500 (44.450)	1.3750 (34.925)	.2500 (6.350)	1.312 (33.338)	.1875 × 2970 × .1720 (4.763 × 7.541 × 4.366)			510	784	68 (12.700)	
2.0000 (50.800)	1.5000 (38.100)	.2500 (6.350)	1.5620 (39.688)	.1875 × 2970 × .1720 (4.763 × 7.541 × 4.366)			774	1,180	124 (15.875)	
2.1875 (55.563)	1.6875 (42.863)	.3125 (7.938)	1.7180 (43.660)	.2187 × 3440 × .2030 (5.556 × 8.731 × 5.159)	.0006 (15)	.0006 (15)	862	1,370	150 (19.050)	
2.5000 (63.500)	2.0000 (50.800)	.3125 (7.938)	2.0310 (51.594)	.2187 × 3440 × .2030 (5.556 × 8.731 × 5.159)			980	1,570	280 (25.400)	
3.1250 (79.375)	2.5000 (63.500)	.3750 (9.525)	2.5625 (65.088)	.2812 × 4060 × .2656 (7.144 × 10.319 × 6.747)			1,570	2,740	580 (31.750)	
3.7500 (95.250)	3.0000 (76.200)	.5000 (12.700)	3.0625 (77.788)	.3440 × 5000 × .3280 (8.731 × 12.700 × 8.334)			2,180	4,020	930 (38.100)	
4.3750 (111.125)	3.5000 (88.900)	.5000 (12.700)	3.6875 (93.662)	.3440 × 5000 × .3280 (8.731 × 12.700 × 8.334)	.0008 (20)	.0008 (20)	3,820	7,940	1,580 (50.800)	
5.3750 (136.525)	4.3750 (111.125)	.7500 (19.050)	4.5625 (115.887)	.4062 × 6250 × .3750 (10.319 × 15.875 × 9.525)			4,700	10,000	3,200 (63.500)	
6.1250 (155.575)	5.0000 (127.000)	.7500 (19.050)	5.3125 (134.937)	.4062 × 6250 × .3750 (10.319 × 15.875 × 9.525)			7,350	16,000	5,000 (76.200)	
8.0000 (203.200)	6.7500 (171.450)	.8750 (22.225)	7.0000 (177.800)	.5000 × 7125 × .5000 (12.700 × 18.097 × 12.700)			14,100	34,800	11,300 (101.600)	

1N≅0.225lbf 1kg≅2.205lbf